



The Brief

The brief for the site is deceptively simple, to provide, fun, function, reconnect the site with its rich past and to retool it for people; To terraform a space that no longer can support humans or much life at all. Reference is to be taken from its history and using period clues to the site and ideological developments and trends of the period to restore its finer grain and provide seasonal changes, multiple functions and experiences, one park with many parks. The context, the economist predicts a double dip recession, developers realising building isn't viable with so much empty space available decide to allow the space to be turned into a park providing a catalyst for inhabitation both for people and wildlife, the era of starchitects and monolith mausoleums stabbing the skyline quietly hushed away giving a new chance for humans to take back the streets.

The design for the site took inspiration from its history; its steam based past and its brewery heritage and the deep sense of loss associated with them being lost from the site. The function informed the shape available to design with, a desire path drawn up and overlaid and reworked taking nods from sources as disparate as Islamic gardens, the great era of the plant collector, the slate for which Hunslet locomotives have become so synonymous, the sinuous forms of railway lines and plumes of smoke; the desire to do right for the site being overwhelming. The notion that there should be an opportunity to connect with nature and the site at any time led to the development of activities in the site, fountains and mist walk in the summer, a festival market, the reinstated tram standards flooding the site with magic, a cinema showing special screenings on a balmy summers eve, a skatepark providing thrills and spills. Pocket parks in which shade, shelter and a book can be read or find a new friend to challenge at chess. The roads rerouted, allowing space in which to dine al fresco or enjoy an ale in the late evening sun, perhaps sneaking a go on the slide on the way. The trees chosen for their colour and seasonality, the era of plant collectors justifying globe trotting for the best species to grace the site.

TERRAFORMLEEDS

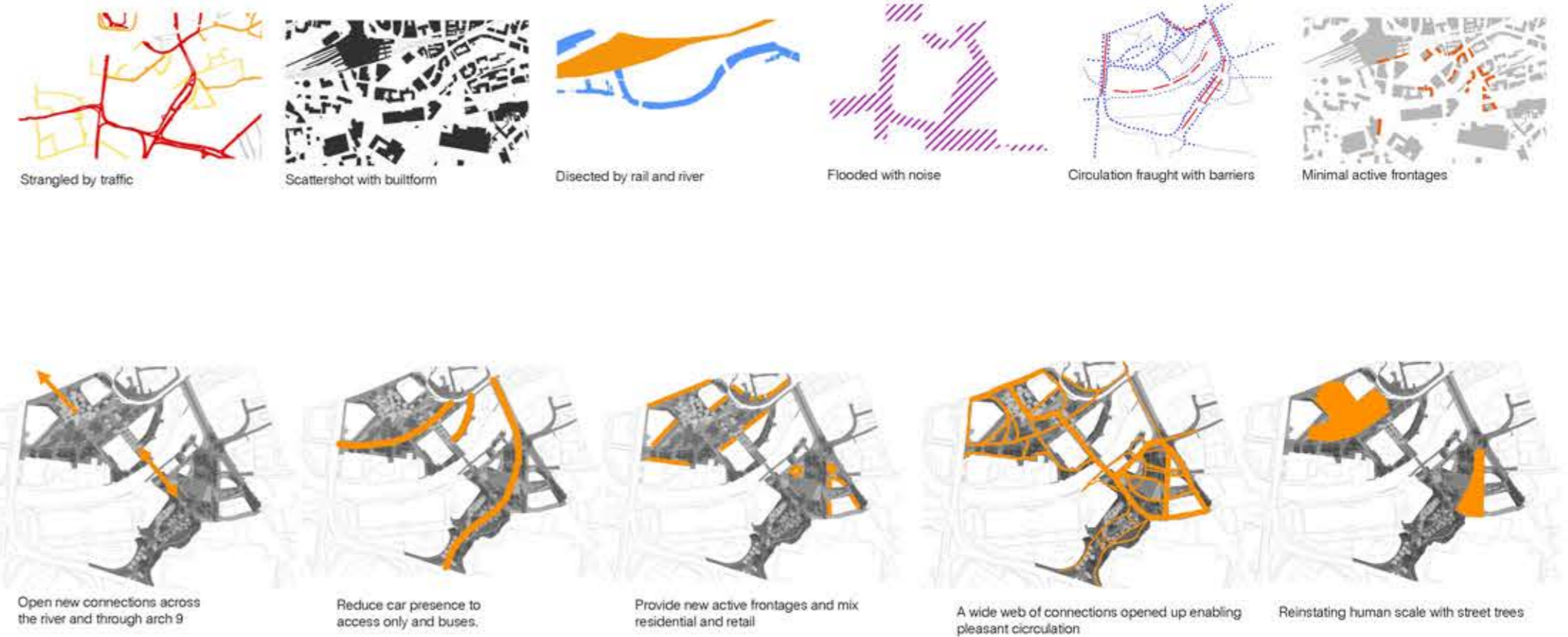


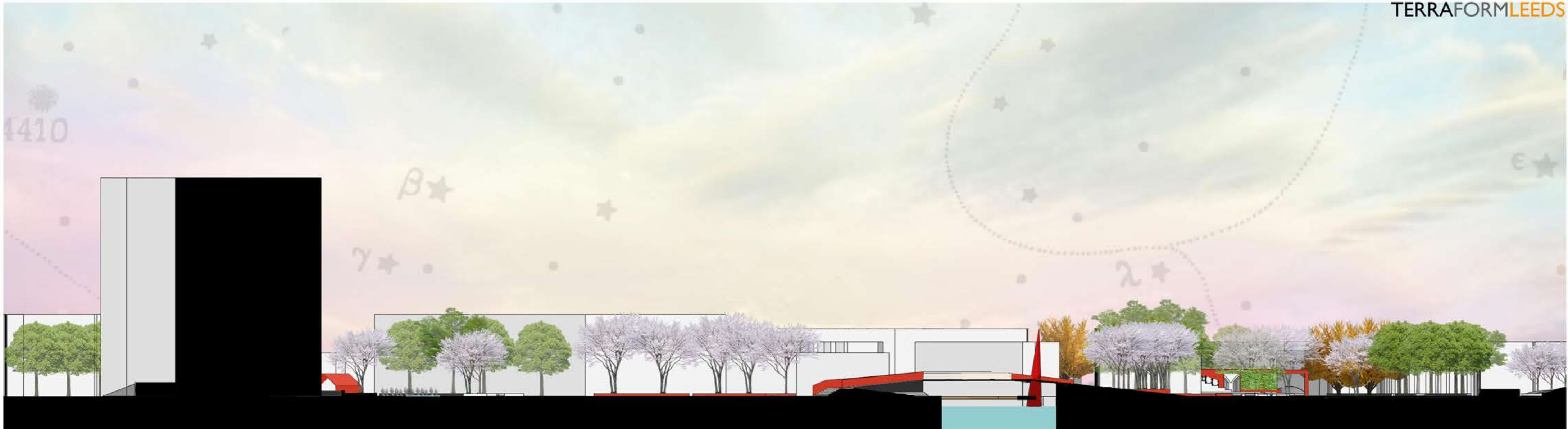
TERRAFORM LEEDS

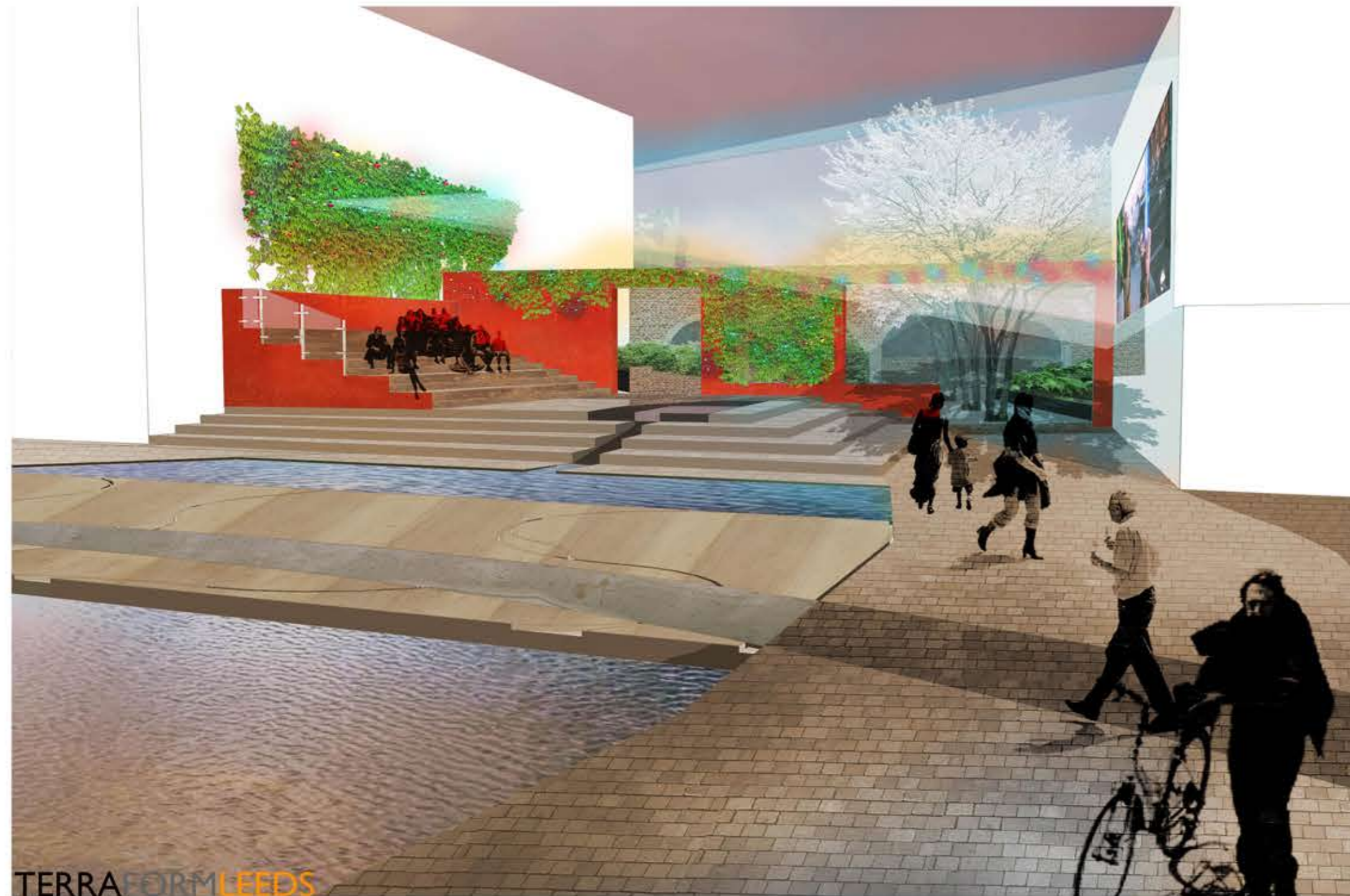


A site of Two characters, the south, rat run and whirring with impassable traffic, the north of the river, vast and open yet full of parked cars.







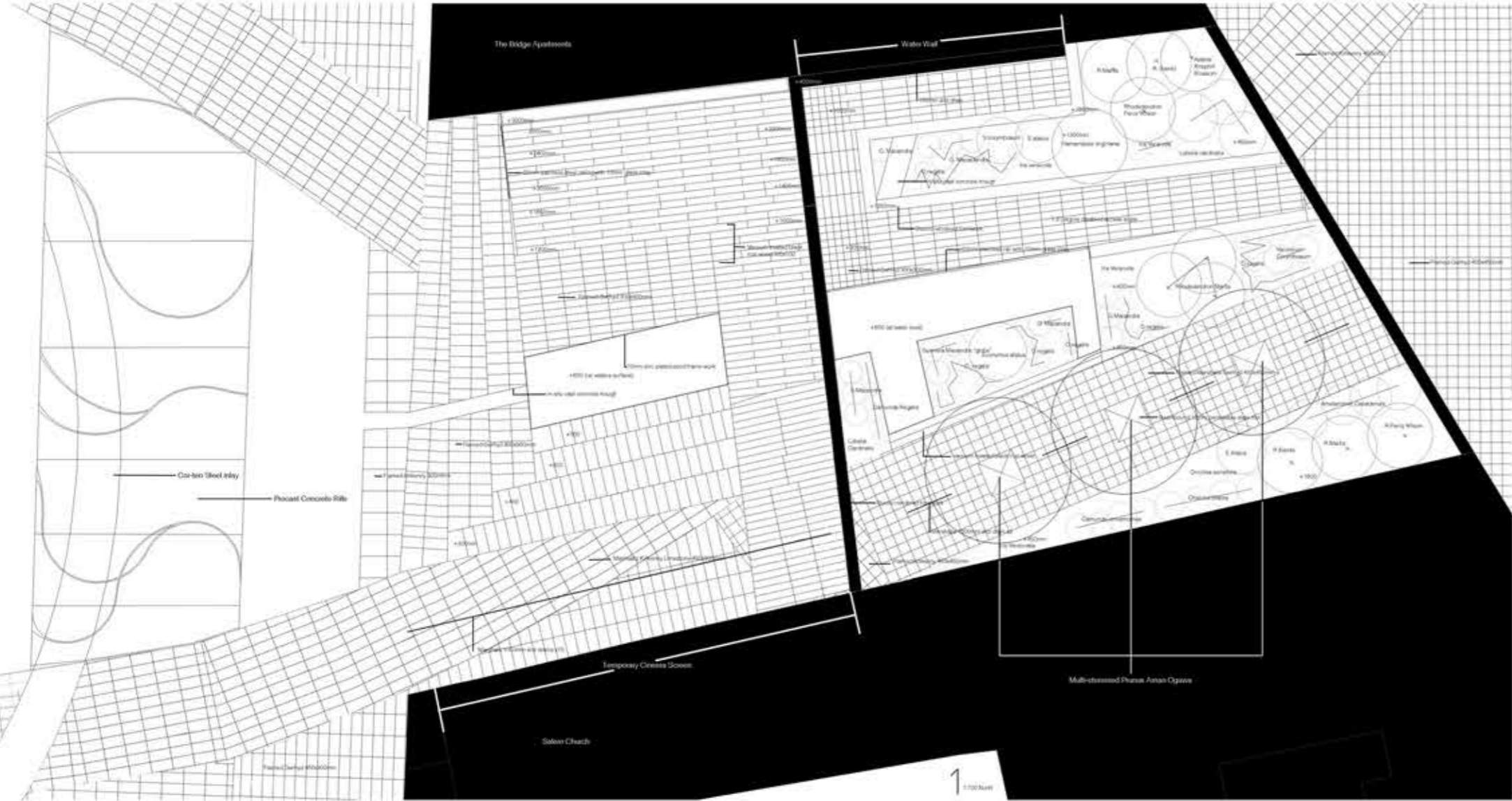


TERRAFORMLEEDS



TERRAFORMLEEDS

A pair of views looking into either side of the cinema pocket park. sketchup/photoshop



Materials swatch



Black Ironwood (Ipé) Cor-ten steel blue patina Marshall's Killkenny Limestone, Flamed. Marshall's Gyrhyd, flamed Precast Concrete Red Ochre Stucco Charcoal Black Stucco Galvanized Steel

Plant Material Swatch



Iris Versicolor Gunnera Magnicata Osmunda Regalis Lobelia Cardinalis Euonymus Alatus Chelonde Glabra Onoclea Sensibilis



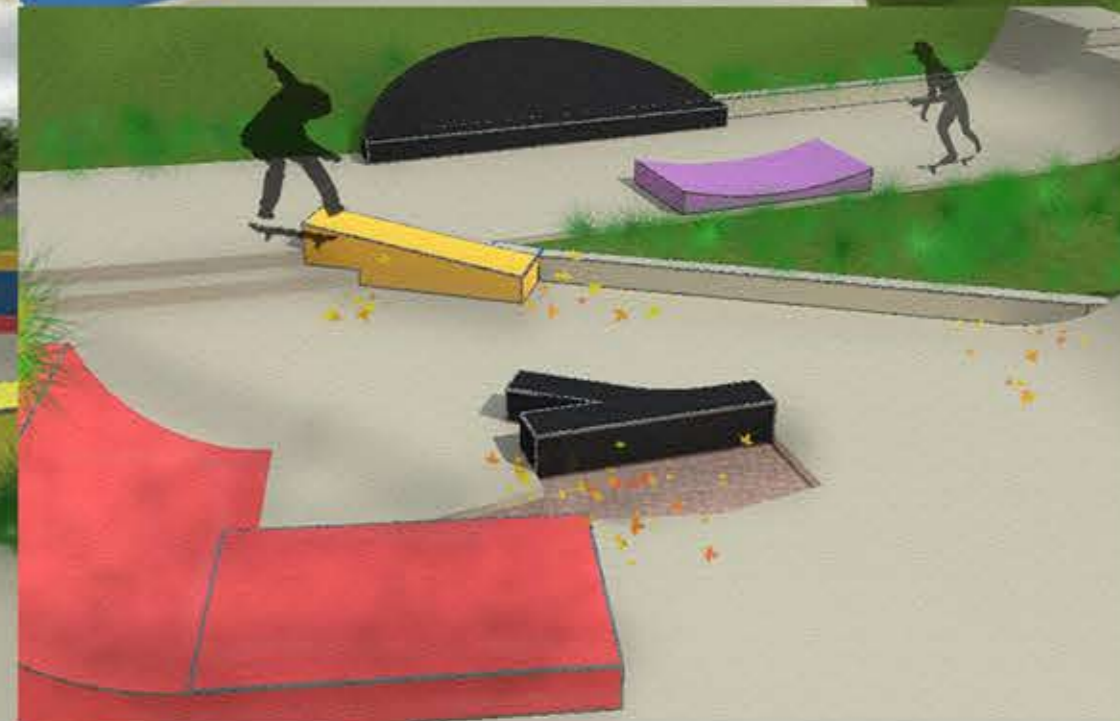
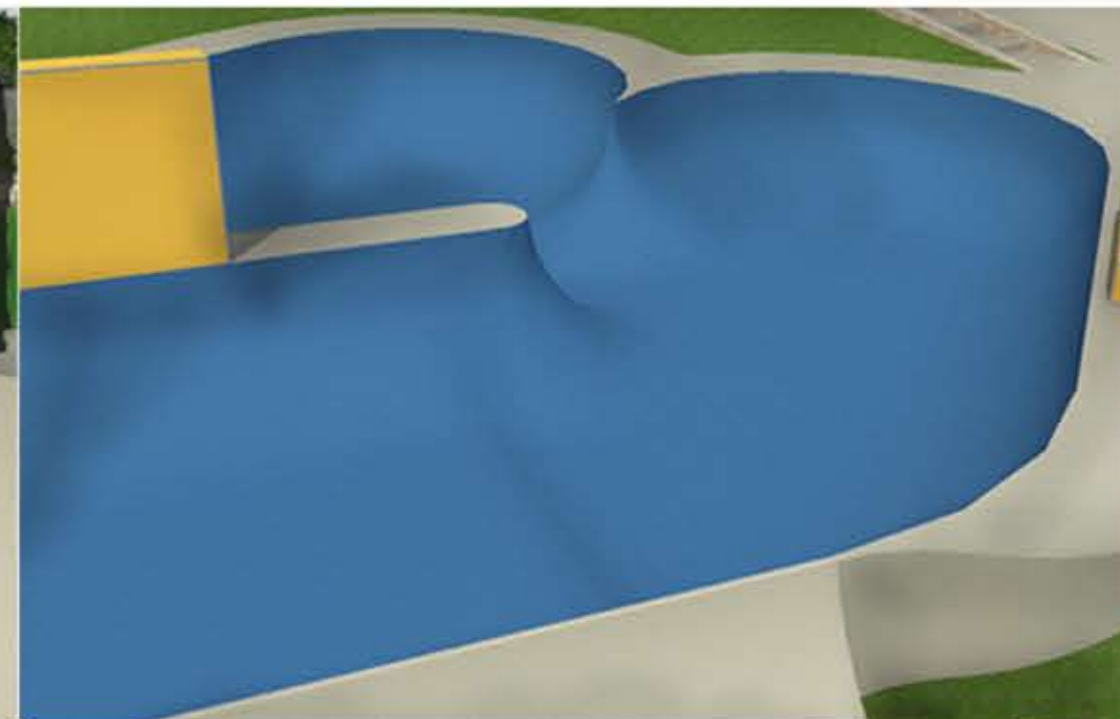
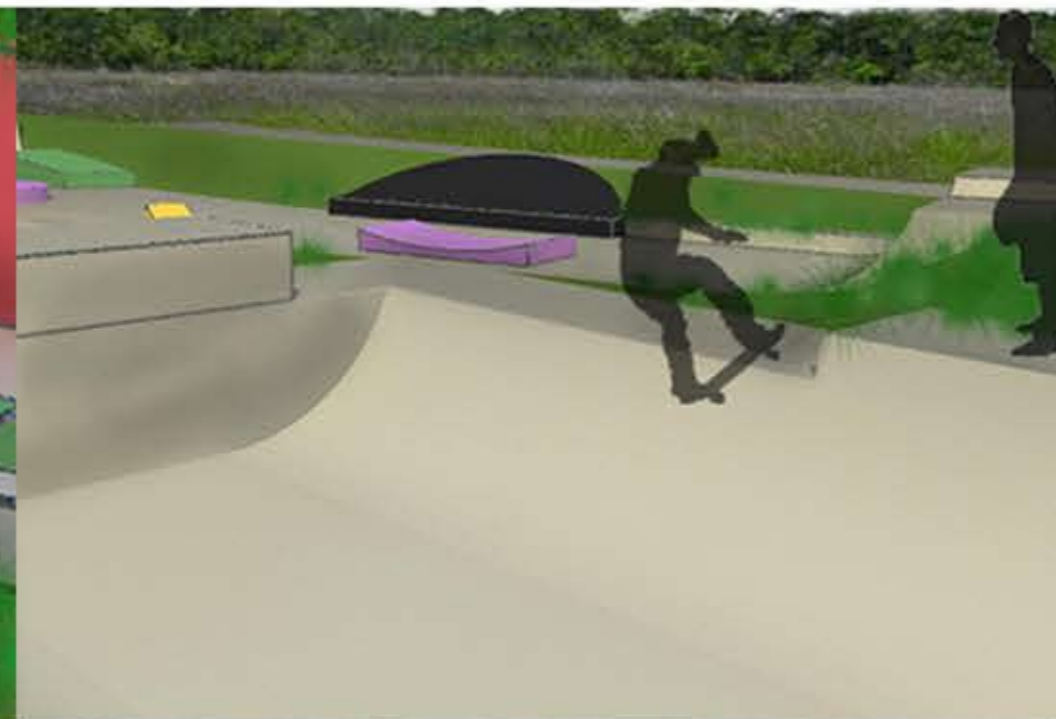
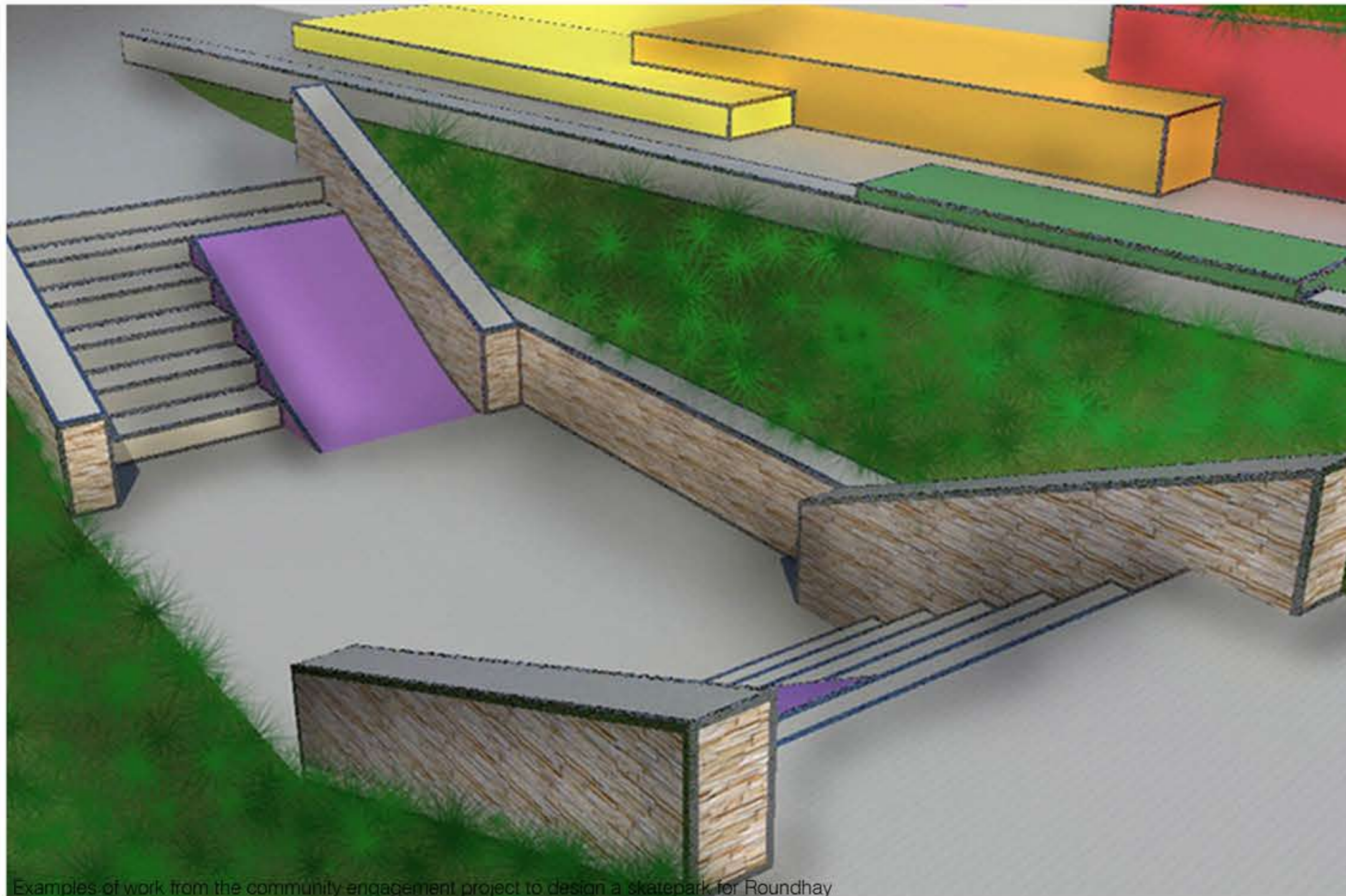
Amelanchier Canadensis Rhododendron Martis R. Bambi R. Percy Wilson Azalea Knaphill Blossom Hamamelis Virginiana



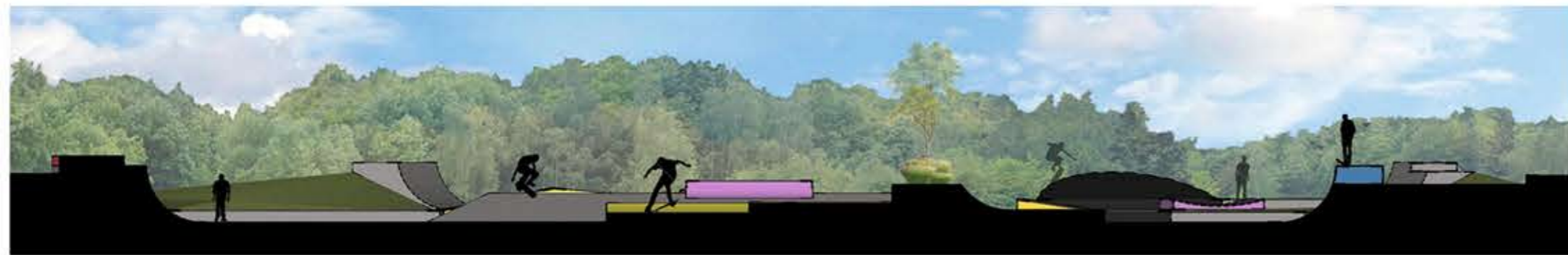
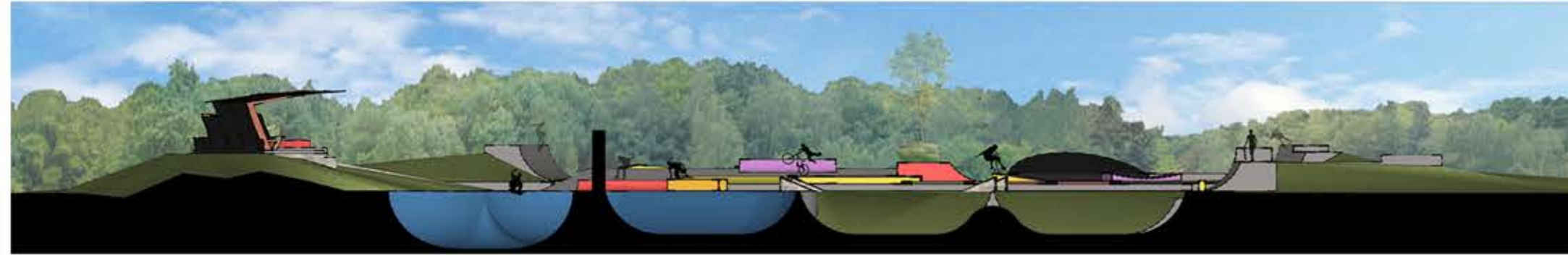
TERRAFORMLEEDS A view looking into the railway arch shops and park Sketchup/Photoshop



A view looking across the water management pond Sketchup/Photoshop



Examples of work from the community engagement project to design a skatepark for Roundhay



Examples of work from the community engagement project to design a skatepark for Roundhay

Examples of sketchbook sketches

