

Pablo Cortez



e: pacortezla@gmail.com
p: 909-994-0366

Hello.

I'm a landscape designer and illustrator. I live in Southern California where I ride bikes and drink coffee. The following pages include some of my designs. I enjoy drawing by hand with pencil, pen and markers but also use Sketchup for creating presentation material and AutoCAD for planting, irrigation and hardscape plans.

Ibañez-Mendez Residence

Pomona, California

Media: Pencil, Pen & Copic Color Markers



planting + hardscape design

Chacon-Klausman Residence

Rancho Cucamonga, California

Media: AutoCAD, Sketchup



planting + hardscape design

Ransier Residence

Westchester, California

Media: Pencil, Pen & Copic Color Markers

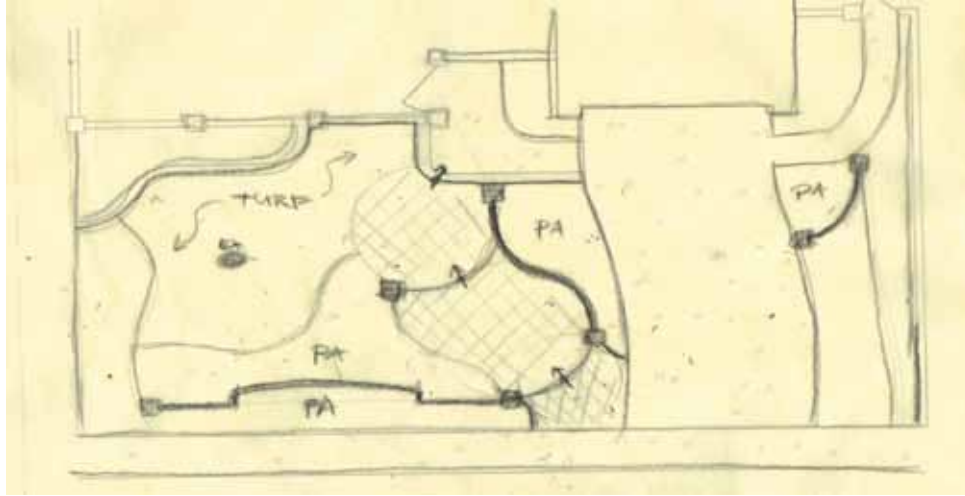


plant design

Kimura Residence

Whittier, California

Media: Pencil, AutoCAD, Sketchup



hardscape & wall design

Resume



Landscape Designer for Forest Lawn Memorial Parks in Glendale, CA
September 2010 – April 2011

Designer for Integrated Design Group LLP in Upland, CA
March 2007 – August 2010

Designer for Closson & Closson Landscape Architects in Santa Ana, CA
December 2006 – March 2007

Takeo Uesugi & Associates in West Covina, CA
June 2006 – August 2006

Software Used:

Microsoft and Mac operating systems, AutoCAD, Sketchup 3D,
Rhino 3D, Adobe Creative Suite including Photoshop, InDesign,
Premiere Pro and After Effects, Microsoft Office Suite, Final Cut Pro.

EDUCATION

B.S. Landscape Architecture from
Cal Poly Pomona, CA Class of 2007

INTERESTS

landscape, film, bike riding, coffee, art, photography,
science fiction, and discovering new spaces

