

The 'microchip' dining table provides a formal seating area for members to discuss ideas about landscape. The seats are resistors which link up to the motherboard paving detail that networks through the garden.



North elevation



Semi-sheltered and lawned informal areas. Modulators and resistors create another comfortable and relaxing seating area. This is screened from the dining space by *Deschampsia* and *Iris 'Superstition'* and *Fritillaria camschatcensis*, which will dance at the slightest of wind movement.

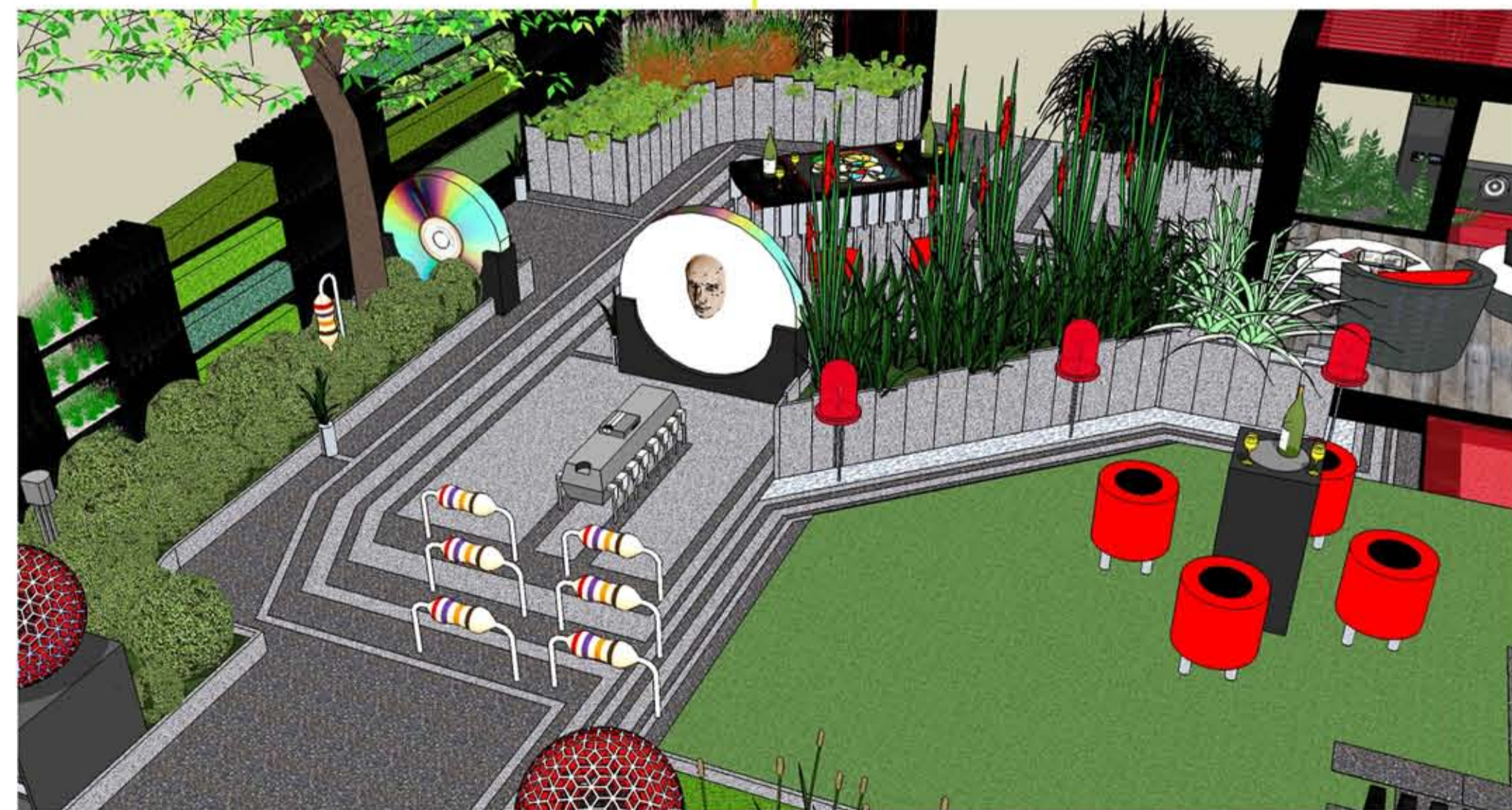


Motherboard Garden

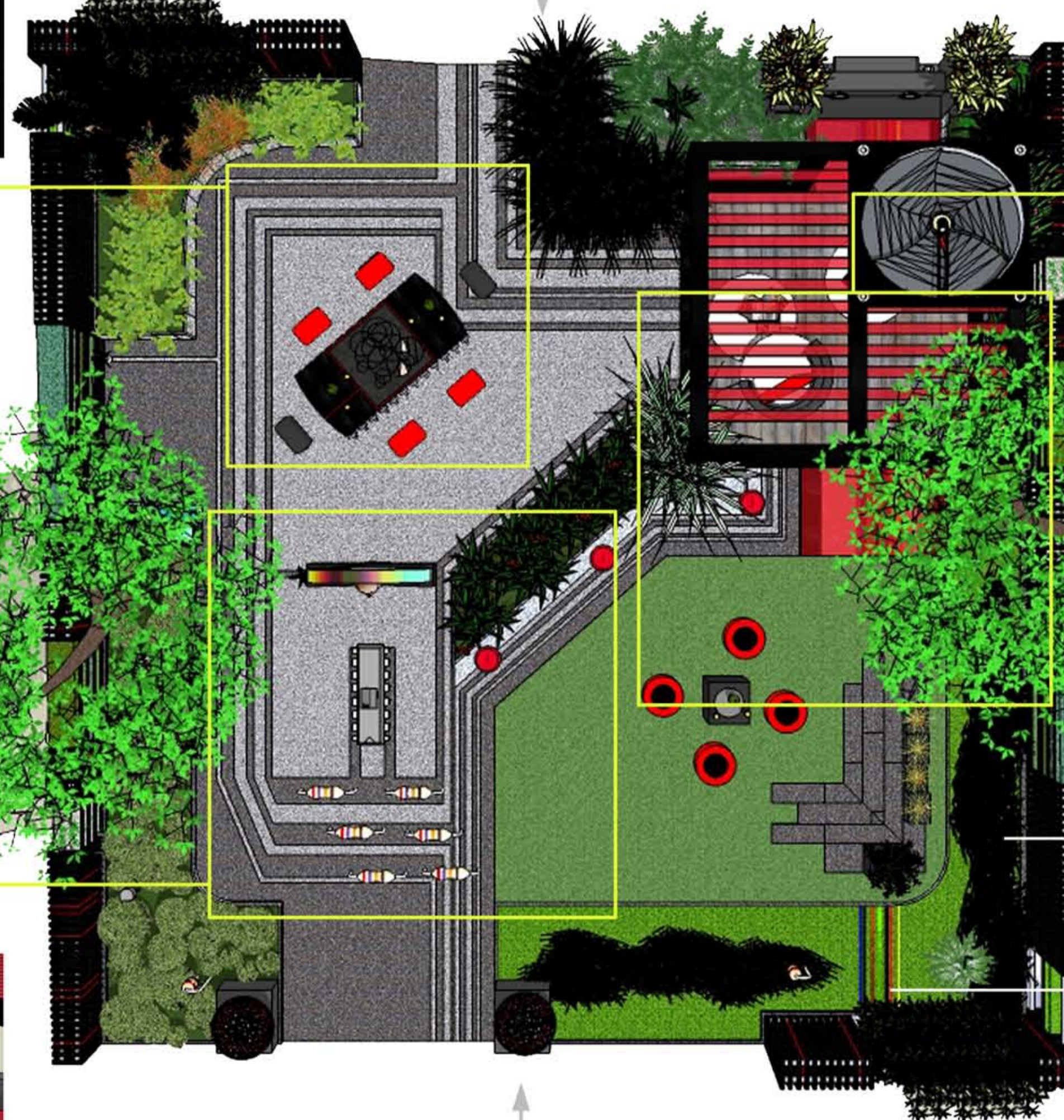
The Motherboard garden designed by Kerry Jackson, epitomises the essence of the Landscape Juice Network. An online community of landscapers, designers and garden professionals.

LJN provides a unique environment to share ideas, advice and collaborate. This virtual relationship is expressed in the garden by the motherboard, making connections and paths to different rooms.

The garden is made up of 4 areas representing the geographical locations of all members. These four areas include dining area, entertainment, lush lawn and chilled pergola. They are social spaces which enable formal and informal interaction between users within a clean manageable garden. Furniture, lighting and other features reinforce the aesthetics of a motherboard, such as LEDs, resistors and USB ports.



The cinema is a space for research and entertainment showing topical films and educational programmes. Through the duration of the show group members profiles will rapidly flash on the matt screen.



South elevation



The garden offers opportunity for communication between planting styles and species. The scope of the planting in the garden is diverse, ornamental, structural, vibrant, edible, architectural and co-ordinated.

The contrasting granite paving signifies a circuit board flowing through the motherboard with upright staggered planters consisting of varied sized *Buxus* with explosions of *Zantedeschia aethiopica 'Crowborough'*.

A pair of *Acer Shirasawanums* gives structure, scale and balance to the Motherboard.

Lagurus ovatus (Hare's tail grass) and *Lobelia 'Queen Victoria'* are sporadically planted through a dense groundcover of clover and *Carex hachijoensis 'evergold'* burst out of the module planters.

Electric cables are visible through 40mm acrylic this suggests the power source for the garden elements and reinforcing the motherboard theme.

Vegetables / herbs grow in the vertical planters constructed from spaced, black scaffold boards. This further expresses the variety of contemporary issues and ideas discussed by the network and innovative solutions made.

The talents of all the show garden group members are expressed by individual elements within the garden e.g spherical red wire lighting fabricated by Julie-anne and formal table mosaic by Helen.

Water cascades from the large mirror polished stainless steel cd, with the addition of angled lighting this creates subtle rippling reflections.

