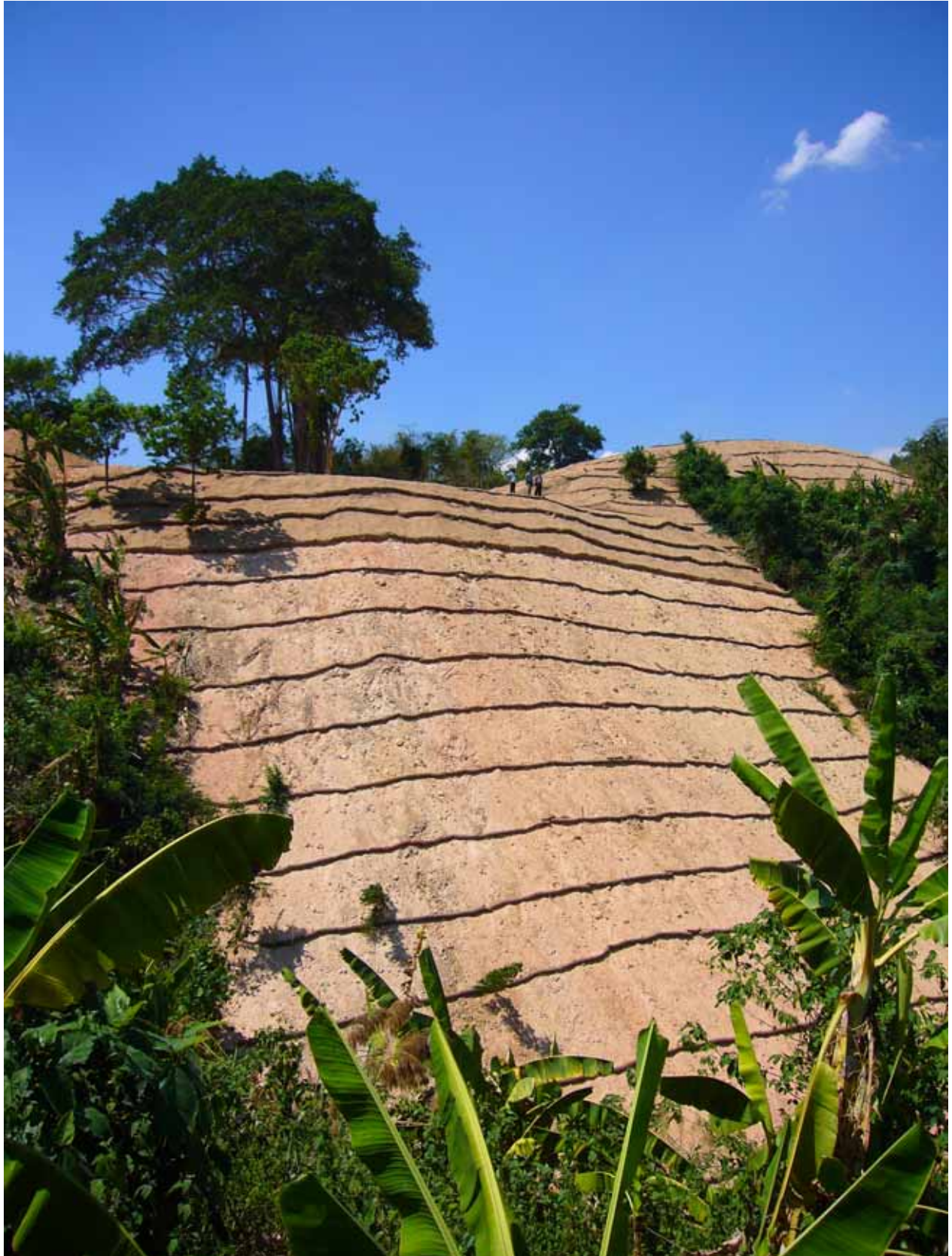




EROSION CONTROL BLANKET AND EROSION CONTROL LOG



EROSION CONTROL PRODUCTS

for protecting disturbed soil from runoff

EROSION CONTROL BLANKET (ECB)



ECB is machine made textile manufactured from organic fibre which will be degradable within 2 years stitched together with reinforced photo degradable PE netting for tensile strength when applying to cover the disturbed soil to prevent erosion from rain.

OBJECTIVE OF USE

- 1- To reduce the impact force of each rain drop to the soil surface.
- 2- To protect the top soil from runoff.
- 3- To stabilize the seed and promote germination.
- 4- To maintain humidity of soil.
- 5- To keep soil temperature stable during the day and night.
- 6- To help producing humus.

HOW DOES IT WORK?

As the matter of fact, a drop of rain can pick the speed up to 80 km/h. when it hits the ground. If there is no cover, the soil surface will be affected and becomes silt to flow down as sediment. That brings erosion to the land and contaminates the water resources below. Naturally, soil cover plants will protect the soil from this runoff, unless they have been destroyed by human for construction or agricultural purposes. So, it is required by law in many countries that bare soil must be covered with Erosion Control Blanket, to absorb impact force of rain fall and keep the soil in place without sediment to flow down to the clean water courses. Meanwhile, it would help germination and pamper the growing plants until they have become mature enough to be the natural protector before the Erosion Control Blanket will be degraded.



PALM FIBER IS BEST FOR MAKING ECB



Palm fiber is extracted from empty fruit bunch disposed from oil palm mill. It has nutrition which is useful for plant growth after its degradation. ECB made of palm fiber will become fertilizer for the grass, and make it stronger to hold the ground surface against erosion.

EFICO ECB is made of palm fiber employing BAT (BEST AVAILABLE TECHNOLOGY) machine from Germany, coping with the highest standard required worldwide.

EFICO ECB Types.

1. **Standard** This is suitable for typical site where Broadcasting of seeds before installing the ECB can be done effectively without difficulty.

2. **Embedded seed** this is the readymade ECB to install without having to apply prior seed broadcasting. It is recommended for the very steep slope.

EFICO ECB Composition.

100% Pure Palm Fiber contains rich nutrition which plants need and is bio degradable to become fertilizer for the soil within two years.

PE Netting imported from USA to reinforce the blanket for tensile strength when installing on the slope or the area where there is shear force such as water channel. The netting is photo degradable.

Pulp paper imported from Germany for making the Embedded Seed Type .The paper is hydro degradable.

EFICO ECB is the cheap means to be used in all kinds of projects designed to stop erosion and enhance a natural way to develop a solid surface of vegetation which will continue to protect the soil from rain, wind and ground water in long term.



DIMENSION: Width 2.30 m., Length 50.00 m., Wight 40 kg.



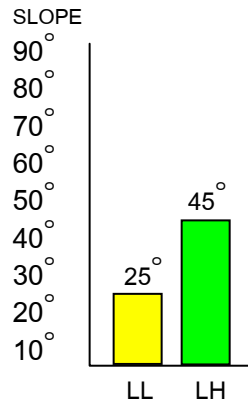
model LL

TENSILE STRENGTH

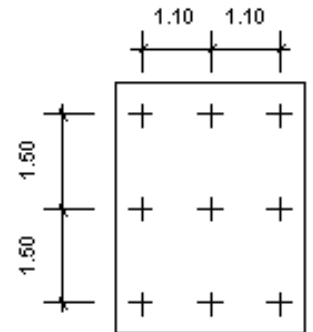
Newtons / 10 cm.

MD 164

CD 174



STAPLE SPACING



1.10 x 1.50



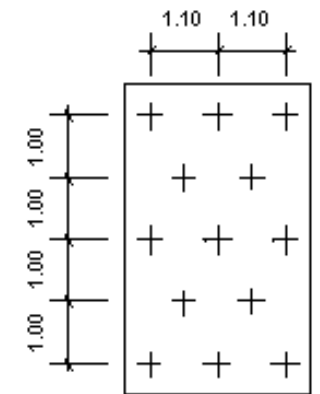
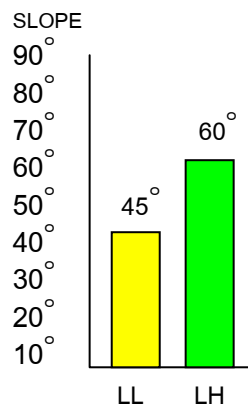
model LH

TENSILE STRENGTH

Newtons / 10 cm.

MD 444

CD 414



1.10 x 1.00



model HH

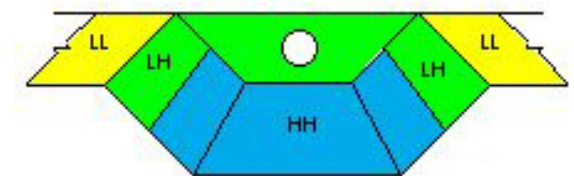
TENSILE STRENGTH

Newtons / 10 cm.

MD 724

CD 654

MODEL RECCOMENDED FOR CHANNEL



model SLL

SLH

SHH

Embedded seed types is the ECB with the same composite as of the above models stitched together with paper containing mulches and seed. Common seed used is Ruzi grass (*Brachiaria ruziziensis*), and to be special order for it is best to install the embedded type within one month after

EROSION CONTROL LOG (ECL)



ECL is made of palm fibrous material pressed into PE wattle netting to form a shape of log. When installed on contour, ECL will work as check dam to protect slit from runoff and to reduce the water speed which may bring erosion to the soil surface.

OBJECTIVE OF USE

- 1- To install along the contour lines to reduce the speed of runoff and to keep the silt.
- 2- To install at the designated direction to divert the water flow to the main drain.
- 3- To use as retaining wall for water bank



EFICO ECL is manufactured in 2 models, both with 3.50 m. and 7.00 m. length
1- Diameter 16 cm., weight 5.7 kg/m., and 2- Diameter 12 cm., weight 4.0 kg.m.

RECOMMENDATION FOR INSTALLATION

Number of ECL and spacing between each row will depend on slope steepness and physical properties of soil. Normally rocky soil or clay could have wider spacing than sandy or laterite soil. Figures given below are a guideline for typical cases.

SLOPE	1 : 1	=	2 – 3 meter
	2 : 1	=	3– 5 meter
	3 : 1	=	5 – 8 meter
	4 : 1	=	8 –10 meter

