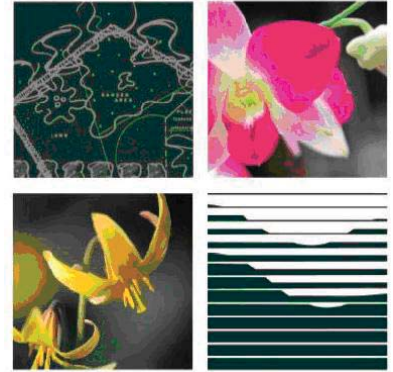




**VALLEY CREST
TREE COMPANY**
The Tree Growing & Tree Moving Company

Southern California Chapter



ASLA

SCC/ASLA Valley Crest Tree Company Event

Saturday April 24, 2010

Increase your knowledge of how to successfully design, specify and maintain landscape trees. Doug Henderson and experts from the Valley Crest Tree Company will be conducting demonstrations and touring the 320 acres with you to answer questions about proper selection, sizing, budgeting, root pruning and transplanting. Tour and lunch provided by Valley Crest Tree Company.

Description:

Nursery tour of 320 Acres
Root pruning and Tree shifting operations
Possible Crane Demonstration

In the event there is inclement weather, please check the SCC/ASLA website for updates: <http://socal-asla.org/>

Reservations are required in advance. No walk-ins.

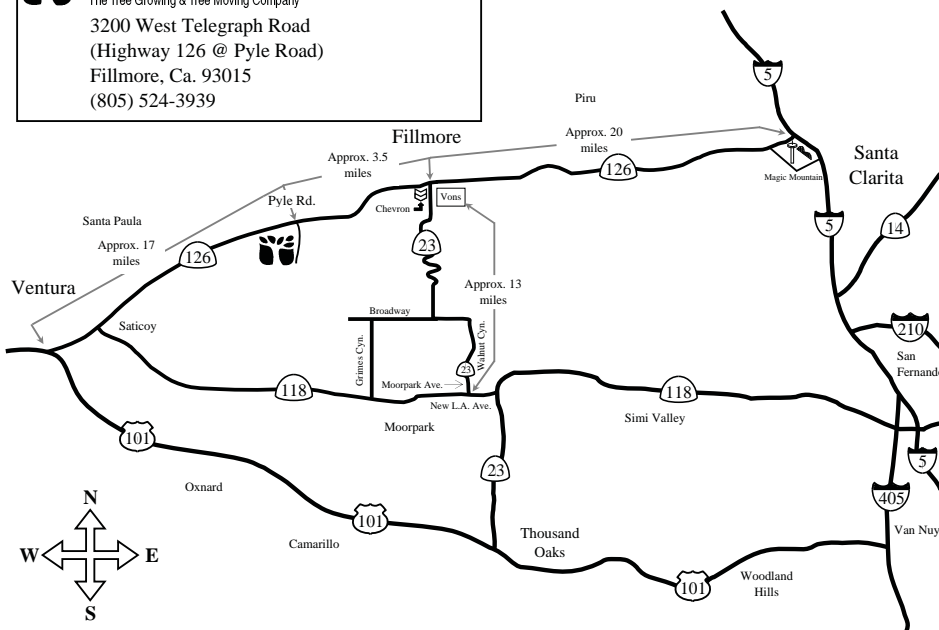
Deadline to reserve: 04/20/10

\$20 ASLA Members

\$35 Nonmembers

\$10 ASLA Student Members

VALLEY CREST TREE COMPANY
The Tree Growing & Tree Moving Company
3200 West Telegraph Road
(Highway 126 @ Pyle Road)
Fillmore, Ca. 93015
(805) 524-3939



To reserve your space, contact:

Vicki Phillipy
714-838-3615 or 714-267-5281

Check or Credit Card Accepted

Mail Check to:
1100 Irvine Blvd., #371
Tustin, CA 92780