



CLASSROOMS



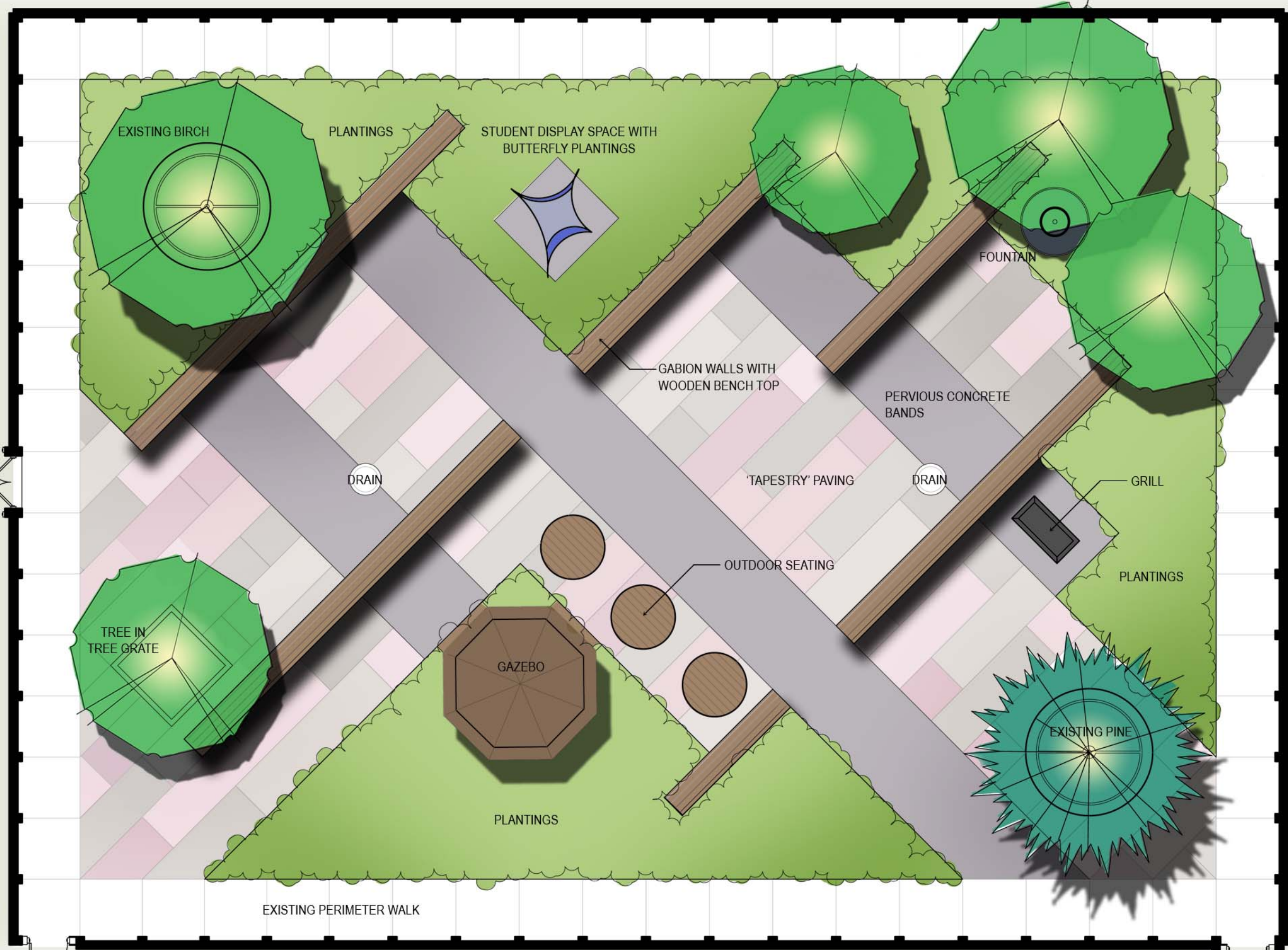
1000 Main Street, Suite 1
Evanston, Illinois
847.905.1281
www.kandkla.com



landscape: architecture + art + sculpture + urban design
1700 w. irving park road, suite 202, chicago, illinois 60613
773.528.7492 ph 773.305.0805 fax info@altamanu.com

SHOP

OFFICES



EXISTING PERIMETER WALK

HALLWAY



SCALE: 1/8" = 1'-0"

ACE Technical High School

5401 South State Street
Chicago, Illinois

Courtyard Plan

August 2009

L-1