

# Master Plan Design Concepts

## Lakeview Cemetery

Windsor, CO



Summer 2009



# Master Plan Design Concepts Lakeview Cemetery

Windsor, Colorado

Prepared for: City of Windsor

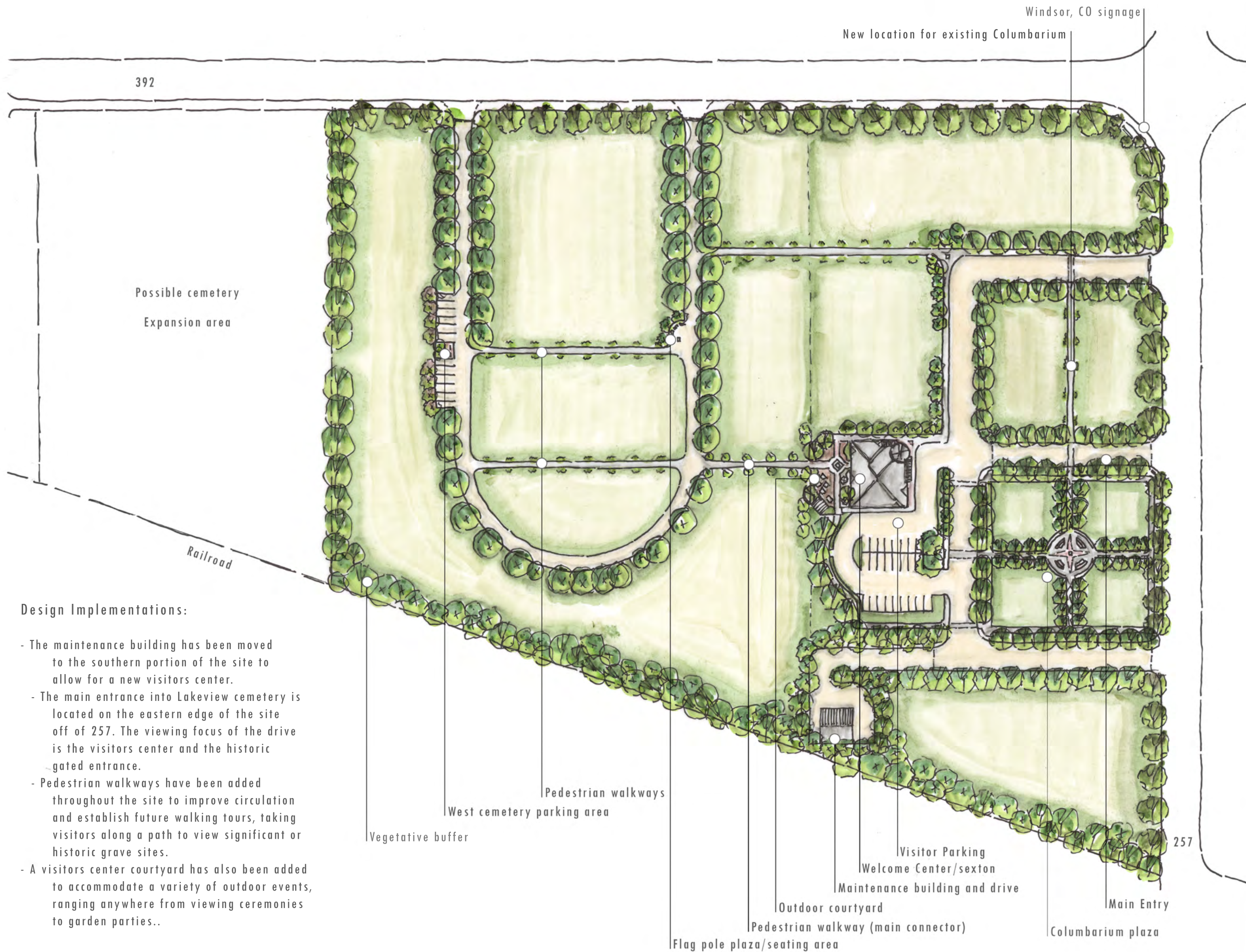
Prepared by: CSU-DOLA Technical Assistance Program

- Melanie Ames, Landscape Architect Intern
- Michael Tupa, Program Coordinator
- Kayla Hirsch, Interior Design Intern
- Anne Skobacz, Interior Design Intern

Final Draft: August 10, 2009



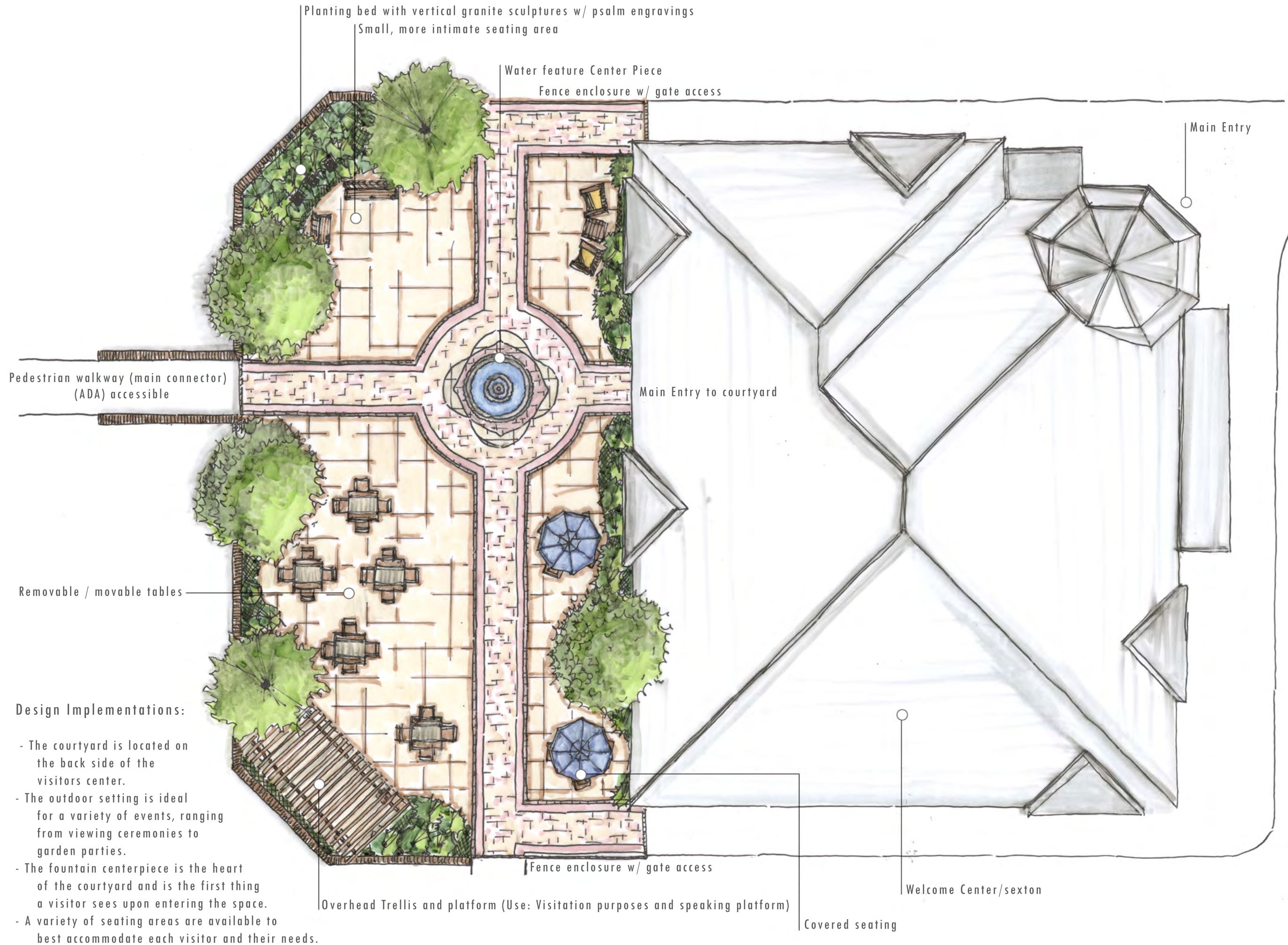
# Cemetery Master Plan



## Design Implementations:

- The maintenance building has been moved to the southern portion of the site to allow for a new visitors center.
- The main entrance into Lakeview cemetery is located on the eastern edge of the site off of 257. The viewing focus of the drive is the visitors center and the historic gated entrance.
- Pedestrian walkways have been added throughout the site to improve circulation and establish future walking tours, taking visitors along a path to view significant or historic grave sites.
- A visitors center courtyard has also been added to accommodate a variety of outdoor events, ranging anywhere from viewing ceremonies to garden parties..

# Cemetery courtyard Master Plan



### Design Implementations:

- The courtyard is located on the back side of the visitors center.
- The outdoor setting is ideal for a variety of events, ranging from viewing ceremonies to garden parties.
- The fountain centerpiece is the heart of the courtyard and is the first thing a visitor sees upon entering the space.
- A variety of seating areas are available to best accommodate each visitor and their needs.

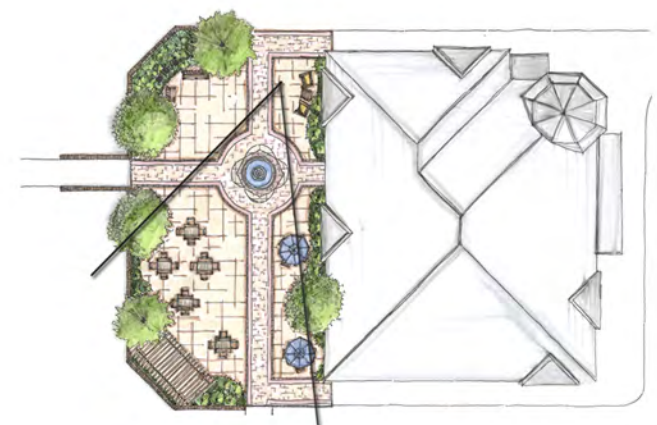
# Courtyard perspective

View: facing South/west



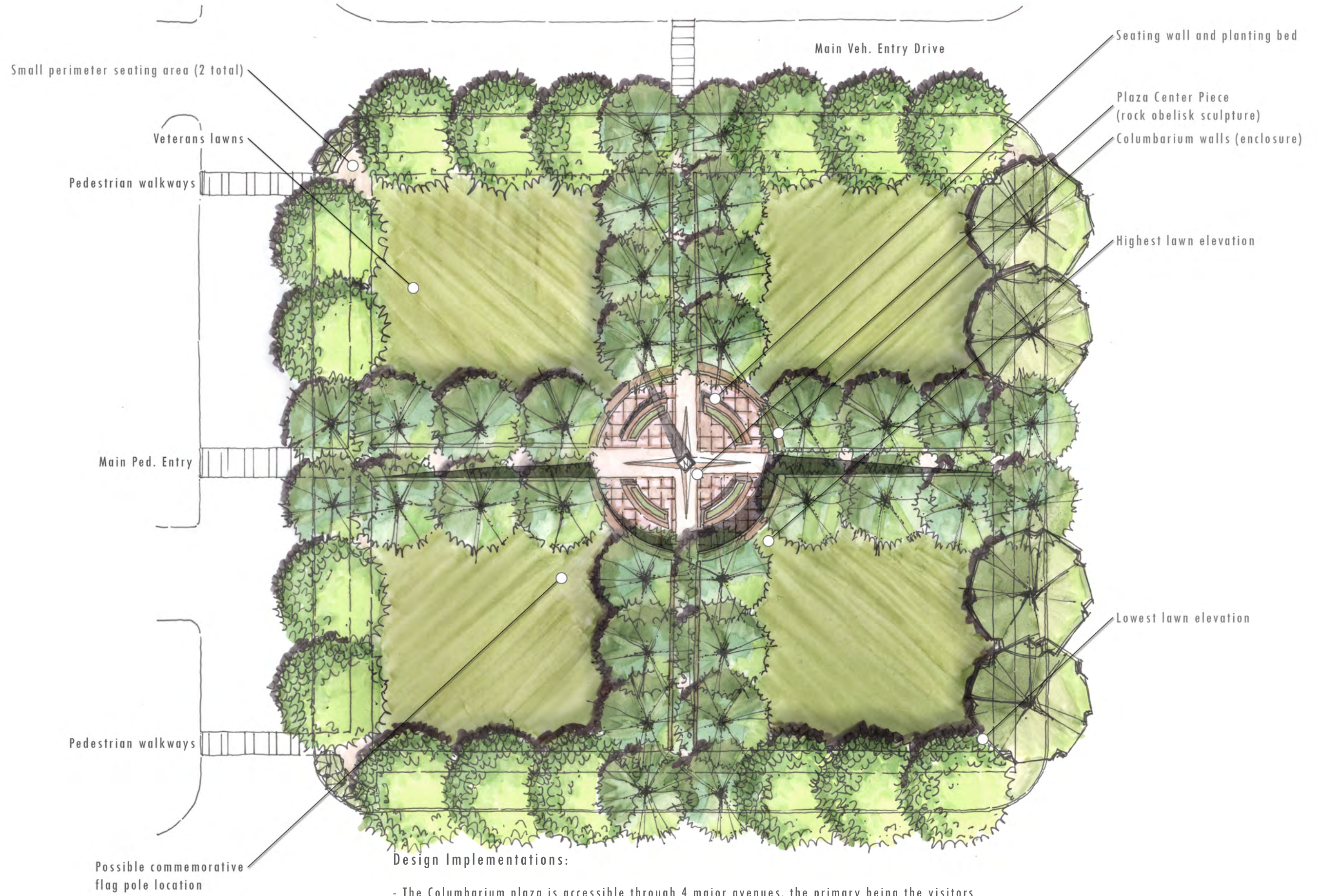
## Design Implementations:

- The stage or platform located in the middle of the above illustration would serve as both a speaking and viewing area. Its structure, meant to somewhat mimic the character of the visitors center.
- The courtyard is enclosed by a retaining wall and wrought iron fence, insuring both safety and privacy.
- The courtyard is able to seat a maximum of 34 people in a variety of seating areas.
- A leading connection point has also been establish on the west side of the courtyard, this particular path will be the starting point for the walking tours and also the point where visitors can view a map of the cemetery (depicting areas / graves of interest) and pick up pamphlets.



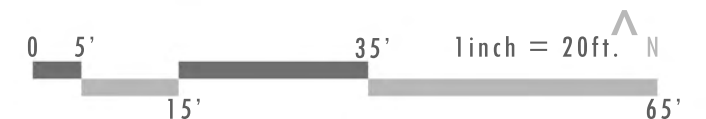
# Columbarium Plaza

## Concept master plan



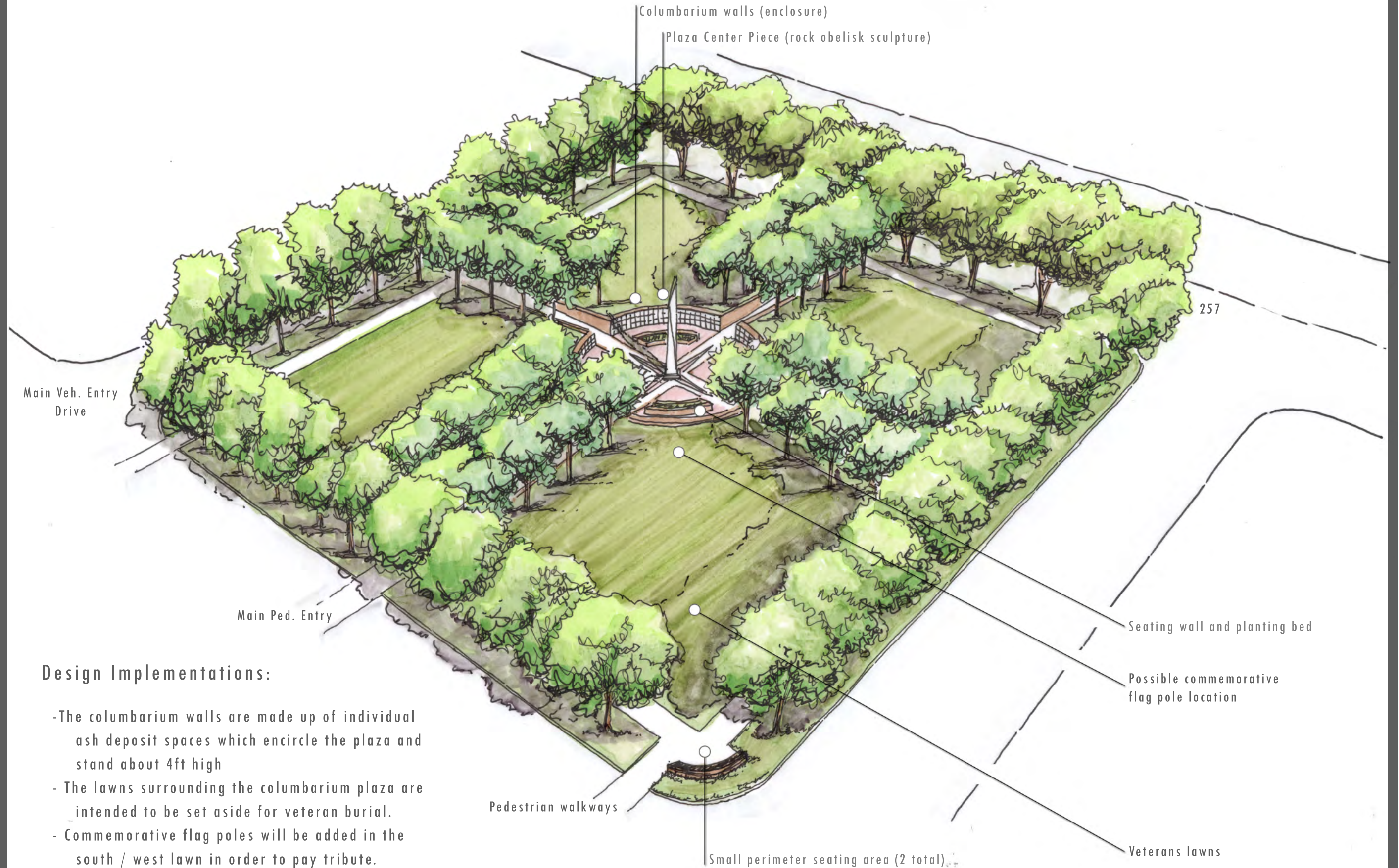
### Design Implementations:

- The Columbarium plaza is accessible through 4 major avenues, the primary being the visitors center connection
- A 30ft high rock obelisk sculpture is located in the center of the columbarium plaza, drawing the visitors eye into the space.
- The surrounding lawns are sloped towards the columbarium walls in an effort to exaggerate the enclosure around the plaza.



# Columbarium Plaza

## Aerial Perspective

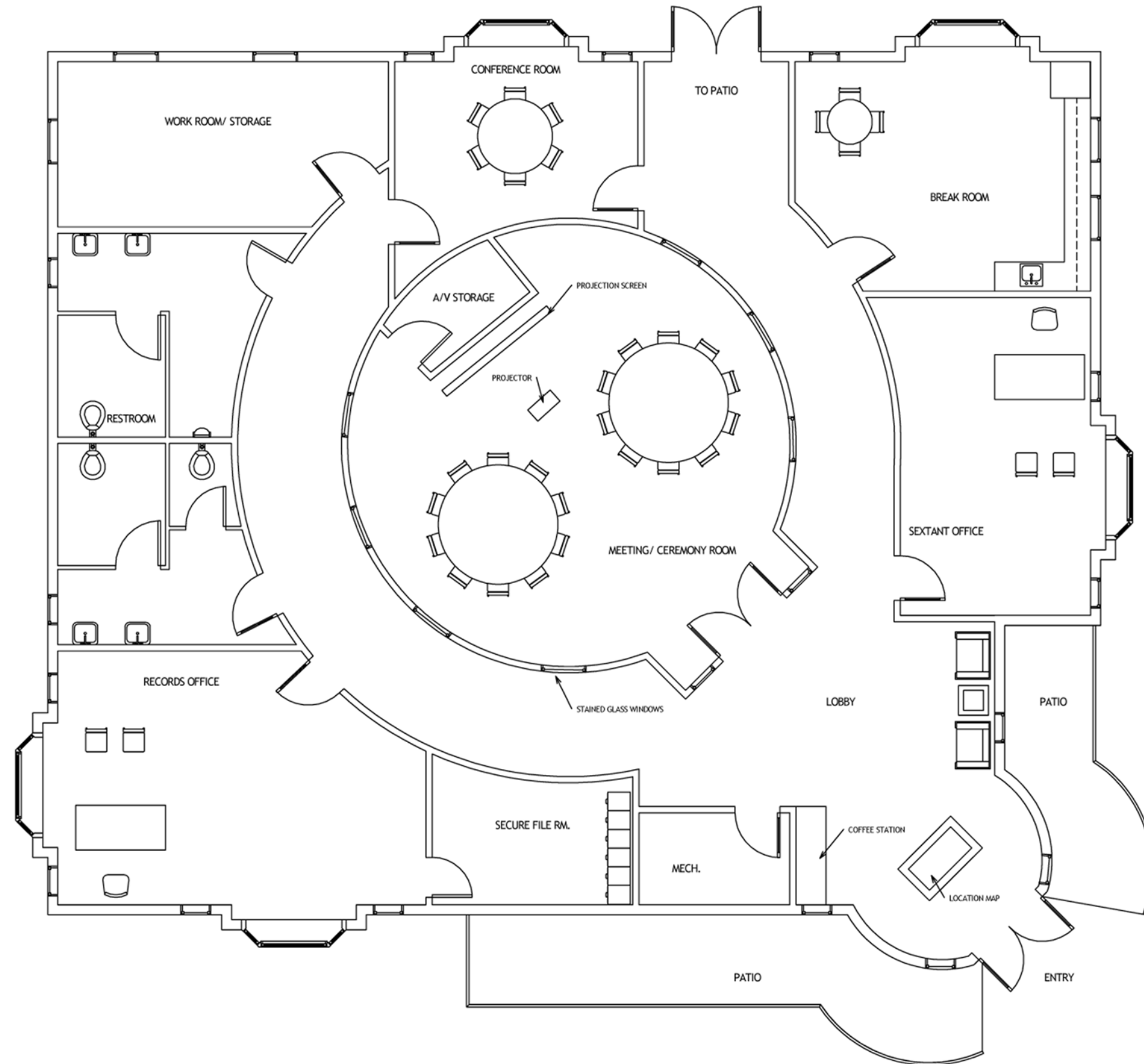


### Design Implementations:

- The columbarium walls are made up of individual ash deposit spaces which encircle the plaza and stand about 4ft high
- The lawns surrounding the columbarium plaza are intended to be set aside for veteran burial.
- Commemorative flag poles will be added in the south / west lawn in order to pay tribute.
- Seating and planting beds have also been added into the plaza to create a more intimate setting.

# Lakeview Cemetery

## Sexton Building Floor Plan



### SQUARE FOOTAGE VALUES

- Lobby/ Circulation: 1055 sf
- Meeting/ Ceremony Room: 668 sf
- Sextant Office: 286 sf
- Mechanical: 62 sf
- Records Office: 402 sf
- Secure File Room: 116 sf
- Womens: 170 sf
- Mens: 177 sf
- Work Room: 232 sf
- Conference Room: 199 sf
- Break Room: 297 sf
- A/V Storage: 43 sf

Total: 3707 sf



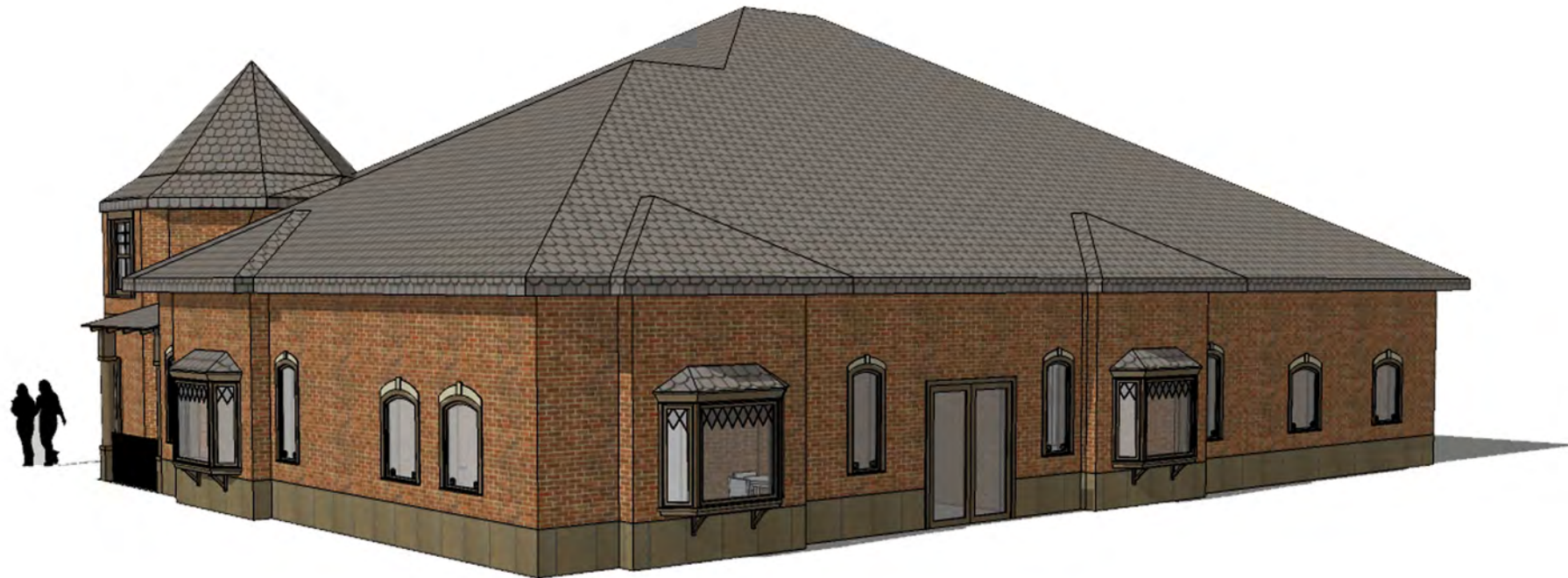
# Lakeview Cemetery

## Sexton Building



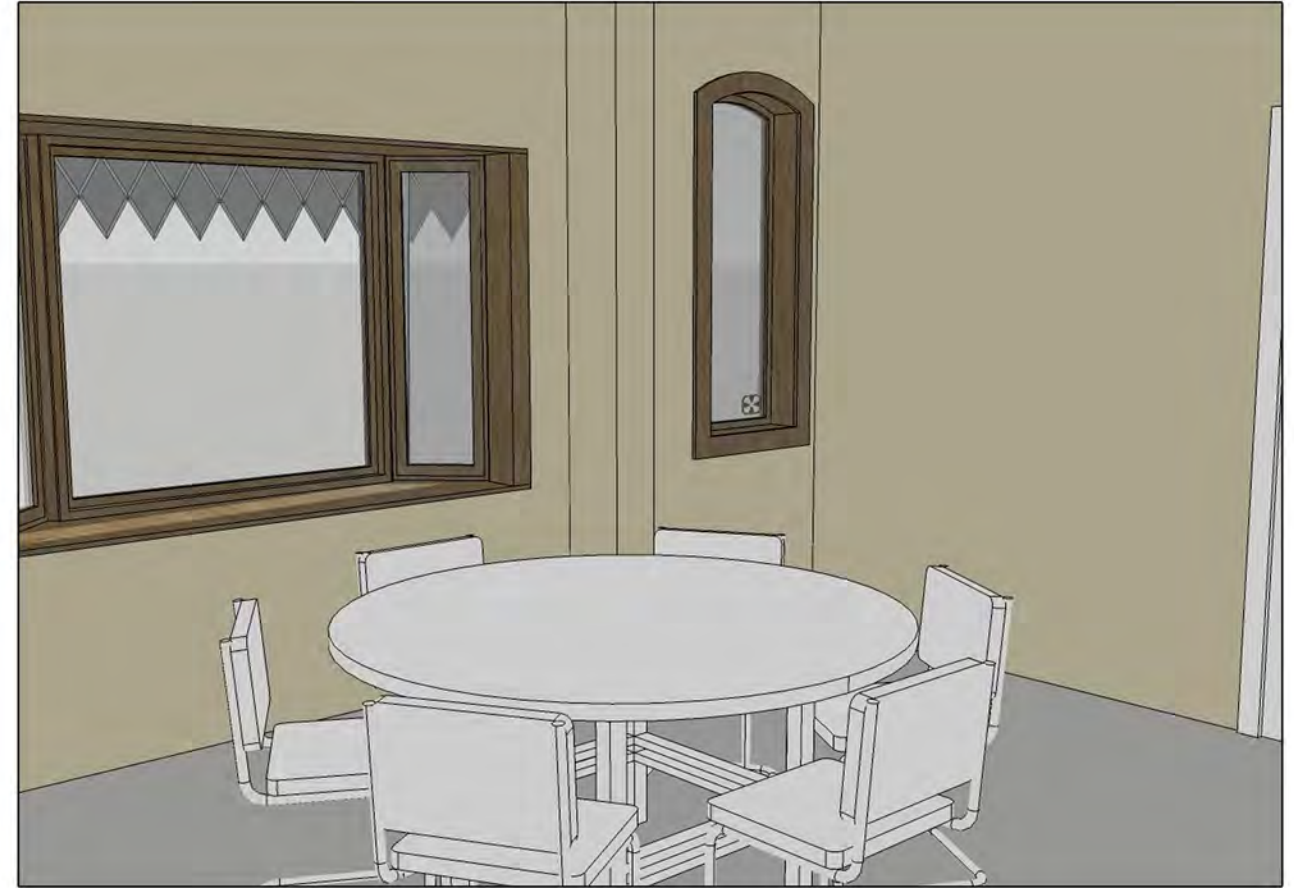
### Building Elements:

- Victorian inspired design
- Brick facade
- Wood Accents
- Victorian Detailed Bay Windows
- Arched Windows
- Front and back patio
- Turret entry





Meeting/Ceremony Room



Conference Room

### Design Implementation:

- Stain-glass windows encased in wrought iron accents.
- Central meeting room occupancy is a maximum of 25 people.
- Meeting room is also equipped with presentation amenities and A/V storage room
- Central visitation room is intended to be used as both a meeting room and a ceremonial visitation area

# Lakeview Cemetery

## Fencing Details



Cemetery Fence

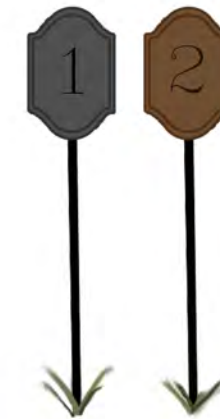


Alternate Cemetery Fence



Historic Lakeview Cemetery Gate

- Located on the east side of first intersection, along the main entry drive.



Historical Walk Number Markers

### Fence and Sign details:

- Black wrought iron fencing
- Brick columns match Sexton Building facade
- Historic Cemetery Gate in white wrought iron
- Metal emblem on main entry gates

# Lakeview Cemetery

Fencing Details



Main Entrance Gate



Secondary Entrance Gate



Third Entrance and Exit Gate

# Master Plan priority Phasing 5 year phasing

## Priority Phasing:

### Year 1:

- Fencing on 392
- Irrigation established
- Streetscape on 392
- Town signage on the Southwest corner of intersection 392 and 257



Entry signage ^



Existing streetscape ^



Irrigation ^

### Year 2:

- Establish interior landscape and trees
- West parking area
- Pedestrian walkways and interior signage
- Veterans flag pole plaza upgrade
- Railroad vegetation buffer



Existing railroad edge ^



Existing landscape ^



Ped. circulation ^



Veterans flag area ^

### Year 3:

- Fencing columns and main entry drive off of 257
- Remove ball field and re-grade
- Establish new entry off of 257
- Trees and streetscape along 257
- Move maintenance building



Maintenance building ^



Existing 257 streetscape ^



Existing Ball Field ^

### Year 4:

- Establish fencing scheme along the tracks
- Visitors Center  
(building, courtyard, parking lot, pedestrian walkways, and landscaping)



Courtyard ^



Fencing scheme ^



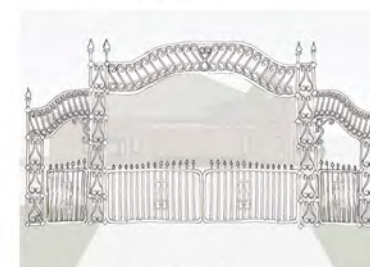
Visitors center ^



Signage ^

### Year 5:

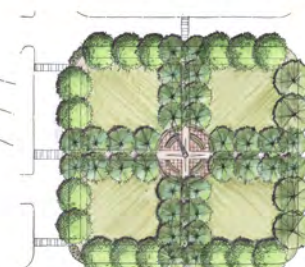
- Historic gate location
- Vegetation for newly established area, former ball field location
- Columbarium plaza
- Veterans lawns



Historic Entrance ^



Aerial view Columbarium plaza ^



Plan view ^



Existing base ball area ^